

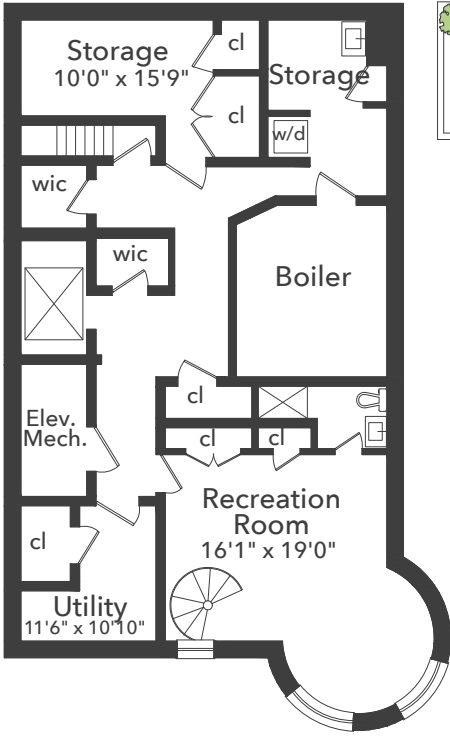


at Douglas Elliman Real Estate

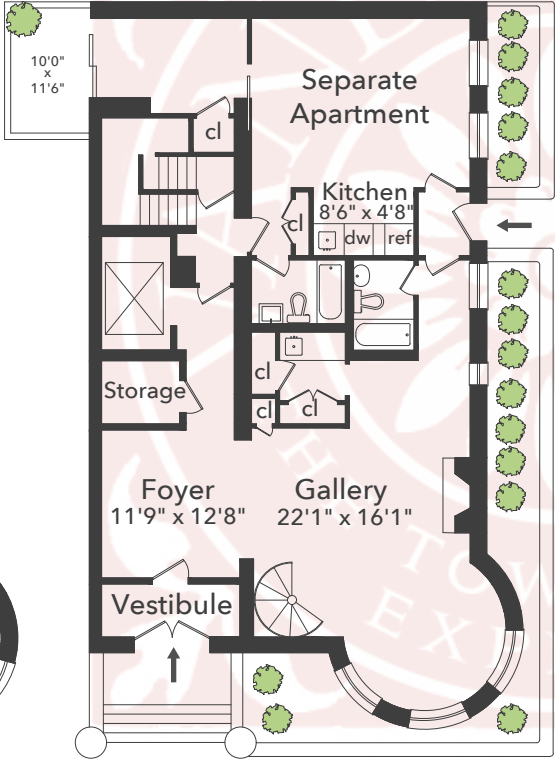


40 Riverside Drive

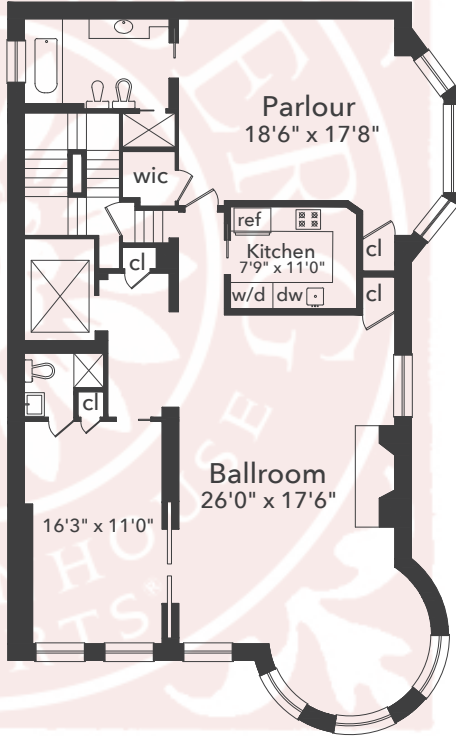
Current Configuration
 approx. 10,720 total sq. ft.
 approx. 8,950 above grade sq. ft.



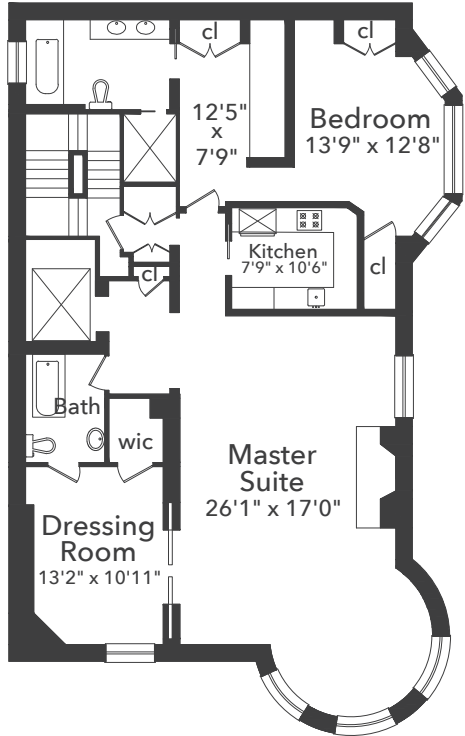
Basement
 Ceiling Height 7'6"
 approx. 1,770 sq. ft.



First Floor
 Ceiling Height 8'6"
 approx. 1,770 sq. ft.



Second Floor
 Ceiling Height 11'6"
 approx. 1,820 sq. ft.



Third Floor
 Ceiling Height 10'6"
 approx. 1,820 sq. ft.

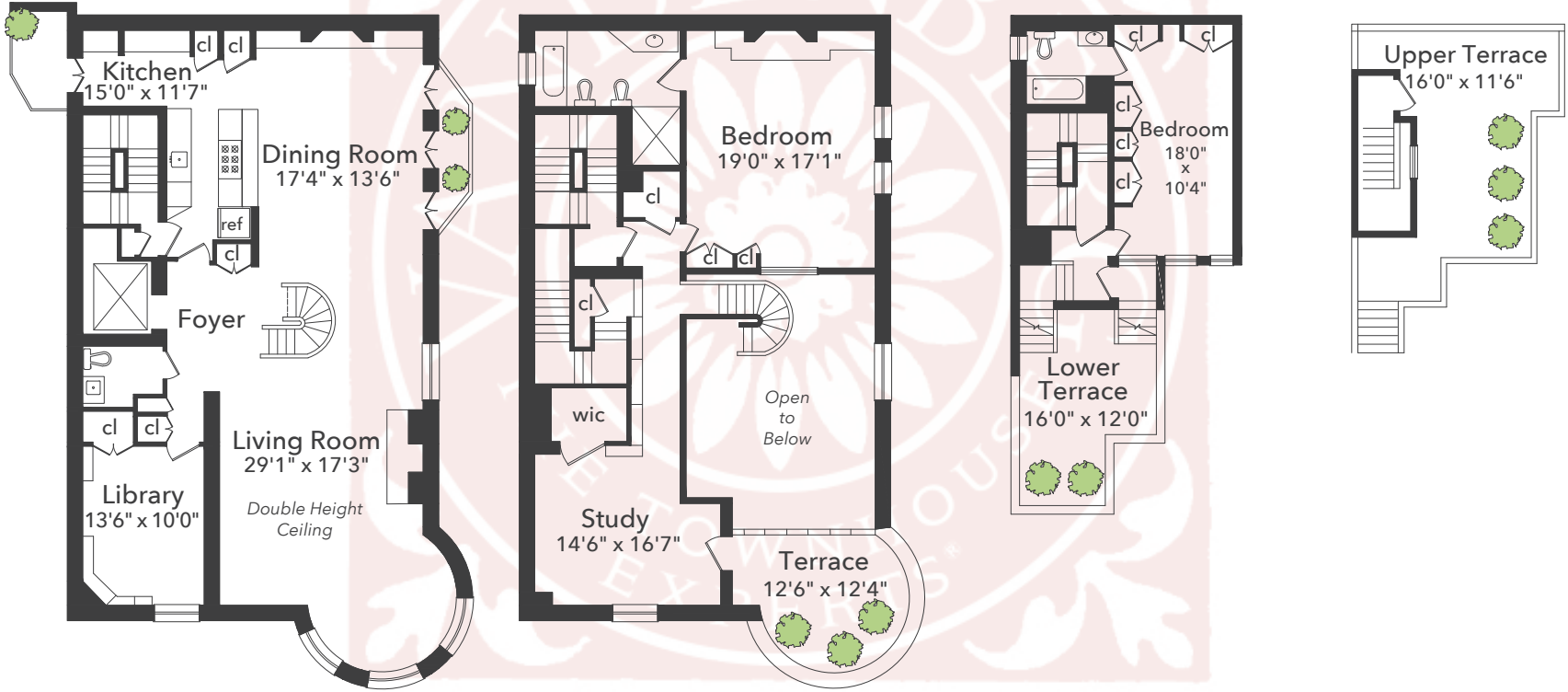


at Douglas Elliman Real Estate



40 Riverside Drive

Current Configuration
 approx. 10,720 total sq. ft.
 approx. 8,950 above grade sq. ft.



Fourth Floor
 Ceiling Height 8'0" / 27'0"
 approx. 1,770 sq. ft.

Fifth Floor
 Ceiling Height 8'3" / 16'9"
 approx. 1,370 sq. ft.

Sixth Floor
 Ceiling Height 7'9"
 approx. 400 sq. ft.

Roof